



The Cookson Company, Inc.

AUTO-TEST™ RETROFIT FIRE DOOR OPERATORS

MOTOR, CHAIN & CRANK

AUTO-TEST™ MOTOR RETROFIT



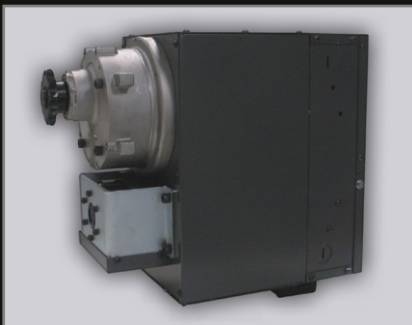
FDO-RM

AUTO-TEST™ CHAIN RETROFIT



FD-2R

AUTO-TEST™ CRANK RETROFIT



FD-3R

Increase Safety for Building Occupants

Conventional fire doors can be a hazard to building occupants. In an alarm situation, they can drop at potentially dangerous speeds. If equipped with one of Cookson's Auto-Test™ Retrofit Fire Door Operators, the rate of descent is regulated not to exceed 12" for chain and crank operated doors, and not to exceed 9" for motor operated doors.

Ease of Testing and Resetting

Spring tension is not released during activation. This means that the fire door never has to be reset after an alarm activation. Auto-Test™ Retrofit Fire Door Operators can be tested and reset as often as desired without needing trained technicians to mechanically reset the fire door. Once the alarm is reset or power is restored, the door can be opened by normal means of operation. The only way to ensure that a fire door is reliable and safe for building occupants is to test it often. Cookson's Auto-Test™ Retrofit Fire Door Operators allow free, unlimited, and safe testing to ensure that the fire doors are 100% reliable.

Out with the Old, in with the New

Outdated releasing mechanisms on existing fire doors can prevent the door from closing properly during alarm activation. These antiquated systems descend at 24" per second or more, create a hazardous condition for occupants, and are costly to test and reset. Auto-Test™ Retrofit Fire Door Operators can be used to convert existing fire doors into state-of-the-art automatic resetting fire doors, controlling the rate of descent to no more than 12" per second, and allowing testing to be performed as frequently as desired. These advanced operators can be retrofit to most manufacturers' doors while maintaining the existing UL or FM rating.



Your Local Authorized Cookson Distributor Can Retrofit Existing Doors From The Following Manufacturers:

Acme • Alpine • Atlas Door • CHI • The Cookson Company • Cornell Iron Works
Kinnear Mfg. • Mahon • Perini • Raynor • Overhead Door • Wayne Dalton

AUTO-TEST™ RETROFIT FIRE DOOR OPERATORS



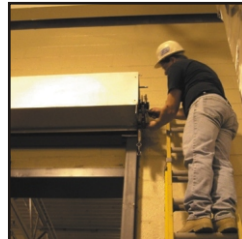
Typical conventional fire door mounted in a critical pathway. Downtime is costly and resetting is problematic.



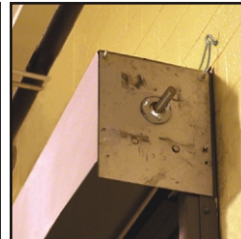
Conventional fire door chain operator, governor and complicated drop out mechanism.



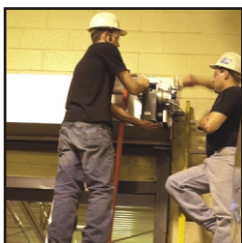
Installation of Auto-Test™ Retrofit Fire Door Operator. Spring tension of door is temporarily relaxed.



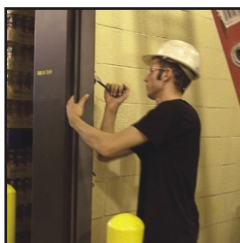
Existing operator, governor and dropouts are removed and discarded.



Door is now ready to accept the Auto-Test™ Retrofit Fire Door Operator.



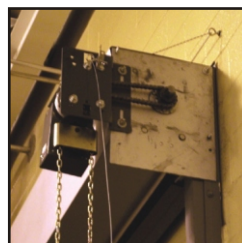
Installation of Auto-Test™ Retrofit Fire Door Operator is quick and easy. All mounting brackets and hardware is provided.



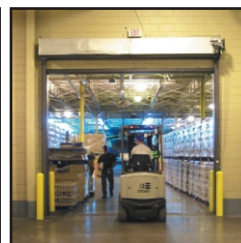
Installer prepares to mount the floor level pull cable to allow the end-user to easily test and reset the door from ground level.



Installers reattach existing fusible link to the new Auto-Test™ operator.



Auto-Test™ Retrofit Fire Door Chain Operator installed and emergency ready.



Door is now fully operational. Typical installation time is approximately 2 hours.

Challenges with Conventional Fire Doors

Resetting the fire door when required drop testing is performed or when it is tripped is costly. A qualified technician must restore spring tension and reset the door.

If spring tension is not restored or is misapplied, occupants may improperly prop open the doors to allow access. This prohibits the fire door from functioning during an actual emergency and puts the building and occupants in danger.

Regular inspection is discouraged when a conventional fire door must be manually reset. As a result, the doors may not be operational due to maintenance issues that have gone unnoticed.

When tripped, the speed of conventionally governed fire doors continues to accelerate during automatic closure, threatening the safety of occupants and equipment around the opening.

Benefits of Retrofitting Existing Fire Doors with Advanced, Auto-Test™ Retrofit Fire Door Operators

Auto-Test™ Retrofit Fire Door Operator are easily reset by facility personnel after automatic closure. There is little or no down time and technicians are not required, saving time and money.

Since Auto-Test™ Retrofit Fire Door Operators can be easily reset by facility personnel after automatic closure, doors are returned to service immediately. The building and occupants are protected.

Auto-Test™ Retrofit Fire Door Operator are safe and reliable. The fire door can be easily tested as often as desired to ensure that it is ready to respond when the need arises.

With an Auto-Test™ Retrofit Fire Door Operator, the door closes at a controlled speed not to exceed 12" per second. Additional sensing devices are also available.



The Cookson Company, Inc.

P.O. Box 23880
Phoenix, AZ 85063

Phone: (800) 390-8590
FAX: (866) 448-6804

marketing@cooksondoor.com

© 2011