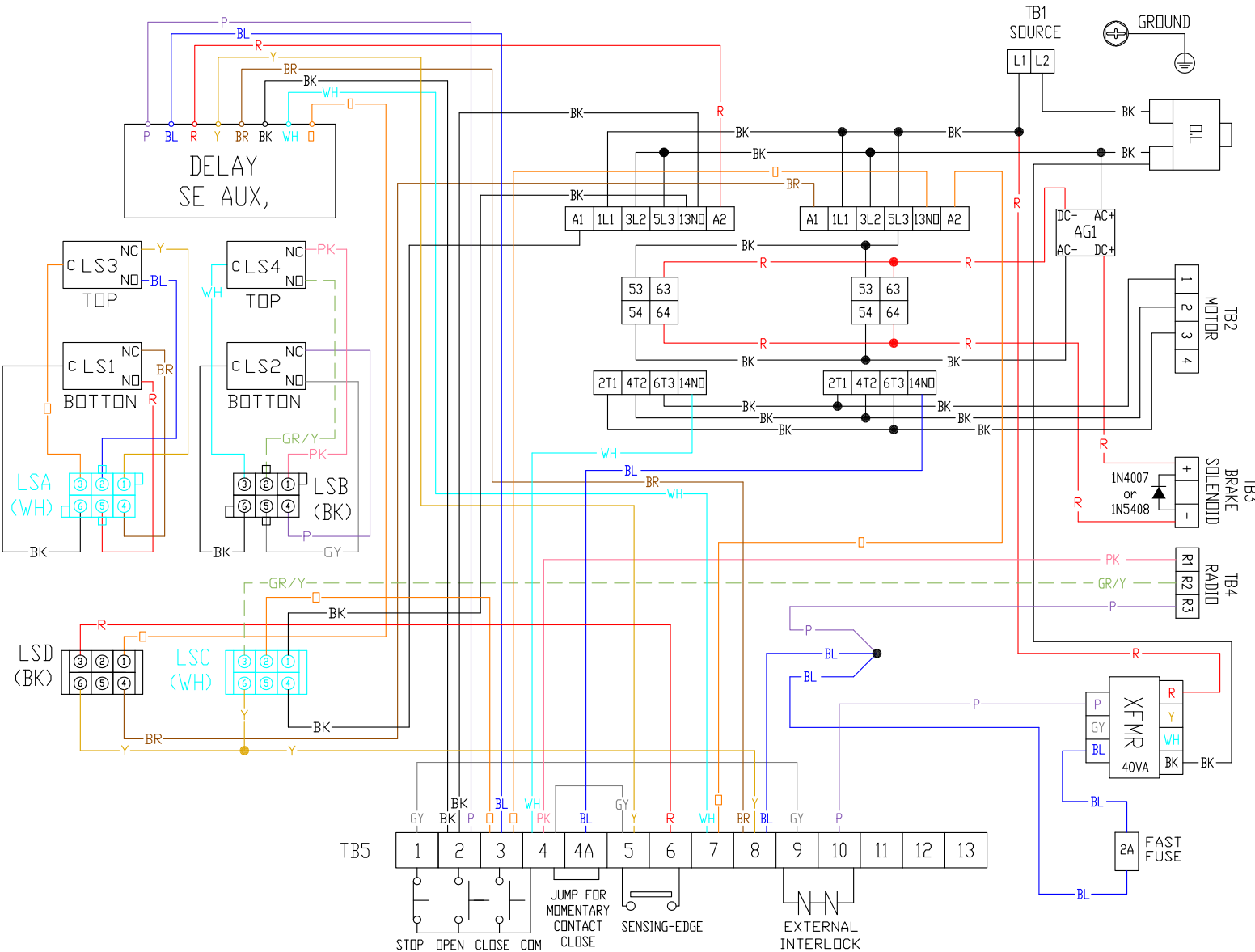
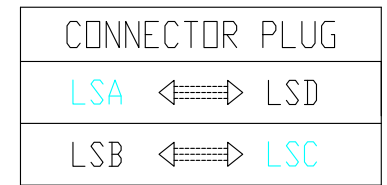


SG Operator 208 / 230VAC 1 Phase Right Hand For 2HP

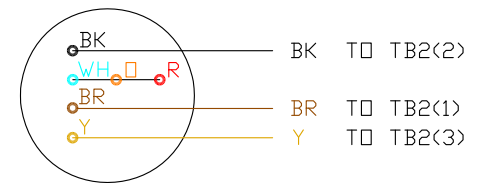


EDB506 R

NOTES:
LSA-LS1 & LS3 MICROSWITCH CONNECTOR
LSB-LS2 & LS4 MICROSWITCH CONNECTOR
LSC-OPEN CONTROL CONNECTOR
LSD-CLOSE CONTROL CONNECTOR



TERMINAL NUMBER:
1 CONTROL STATION-STOP
2 CONTROL STATION-OPEN
3 CONTROL STATION-CLOSE
4 CONTROL STATION-COMMON
4&4A JUMP FOR MOMENTARY CONTACT CLOSE
5&6 SENSING EDGE (S.E.) CONNECTION
7&8 DOOR CLOSING WARNING SIGNAL 24VAC
9&10 EXTERNAL INTERLOCK



208V/230V 1 PHASE
MOTOR CONNECTION